

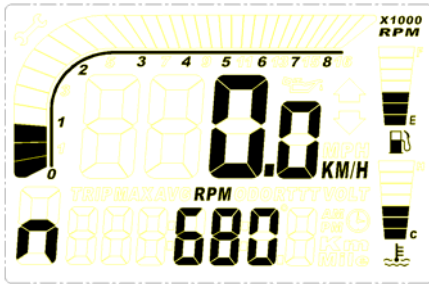
Digital Gear Indicator

Install & Setup

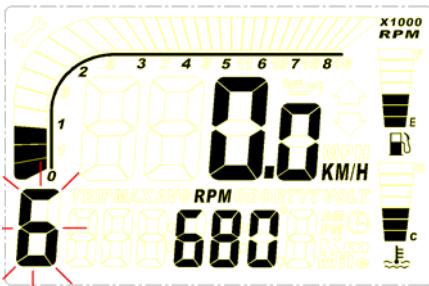


Setting Mode (Suitable road or Rolling road to confirm gear ratios) :

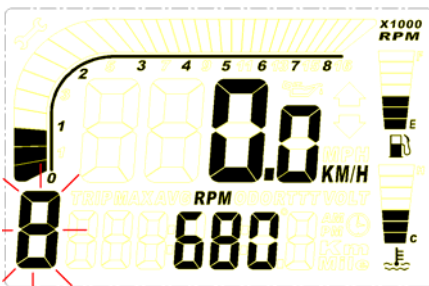
1. The Motorcycle in Neutral and the Engine Running
2. LCD show n
3. Select RPM mode
4. Press & Hold **MODE** key More than 2 sec.



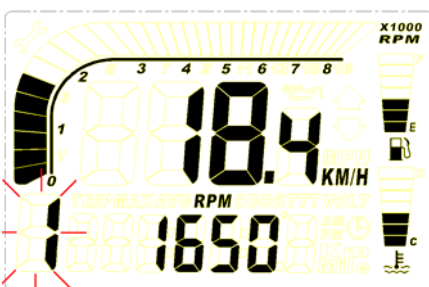
Press & Hold **MODE** key



Press **RESET** key



Press **MODE** key



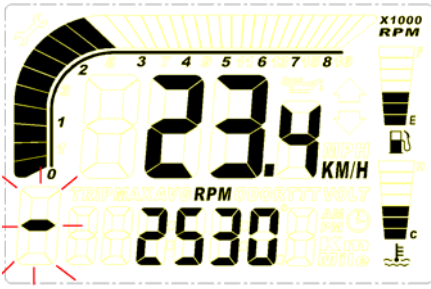
Gear Indicator Setting

1. Set Number of gears (Default=6)
2. LCD show 4~8 and Flashing
3. Press **RESET** key to change the Number of gears

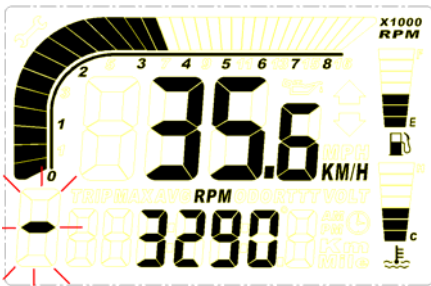
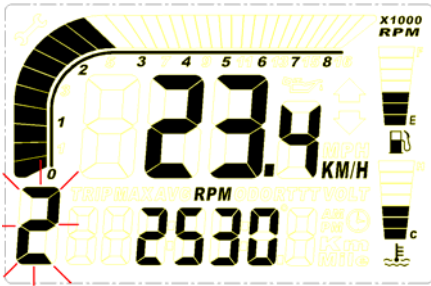
4. Press **MODE** key to next setting mode

Gear Ratios Setting

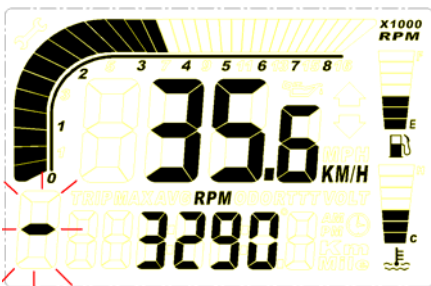
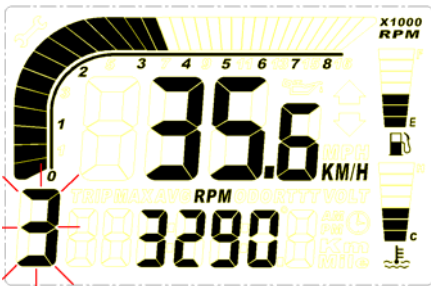
1. LCD show 1 and Flashing
2. Select Your Motorcycle to 1st Gear



Press **MODE** key



Press **MODE** key



3. Run the Engine at between 2000 ~ 4000 RPM
4. Fix the Speed & RPM about **5 seconds until the - Flashing**
5. Press **MODE** key to next Gear setting
6. The LCD will then Change to **2**

7. LCD show **2** Flashing
8. Select Your Motorcycle to **2nd** Gear

9. Run the Engine at between 2000 ~ 4000 RPM
10. Fix the Speed & RPM about **5 seconds until the - Flashing**
11. Press **MODE** key to next Gear setting
12. The LCD will then Change to **3**

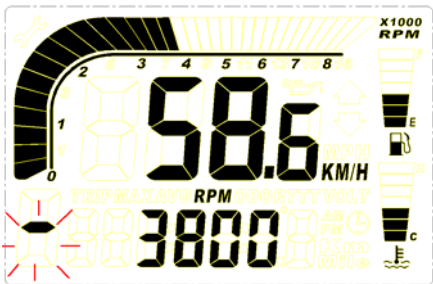
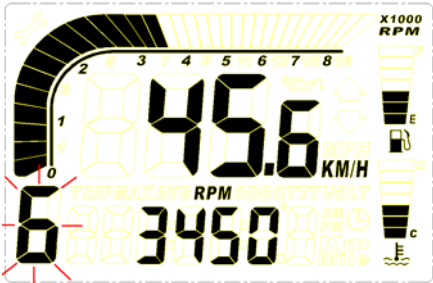
13. LCD show **3** Flashing
14. Select Your Motorcycle to **3rd** Gear

15. Run the Engine at between 2000 ~ 4000 RPM
16. Fix the Speed & RPM about **5 seconds until the - Flashing**
17. Press **MODE** key to next Gear setting
18. The LCD will then Change to **4**

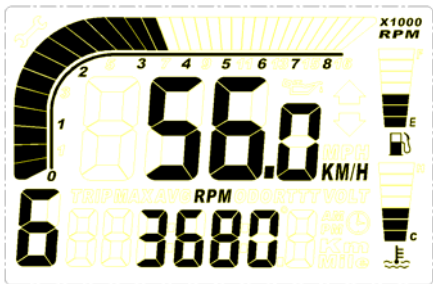
.

.

.



Press **MODE** key



- 19. LCD show **6** Flashing
- 20. Select Your Motorcycle to **6th** Gear

- 21. Run the Engine at between 2000 ~ 4000 RPM
- 22. Fix the Speed & RPM about **5 seconds** until the - **Flashing**
- 23. Press **MODE** key to return Normal Mode

- 24. Normal Mode